

Skallerup

2023 prices by season:

- LOW** When prices are lowest.
- MID** E.g. Danish school and public holidays.
- HIGH** Full weeks in the summer holidays.

The seasons are shown on this calendar. You will find our daily rates at skallerup.dk, but we recommend taking a closer look at the prices below first.

JAN	FEB	MAR	APR	MAY	JUN	JUL	AUG	SEP	OCT	NOV	DEC
■ Su 1	■ We 1	■ We 1	■ Sa 1	■ Mo 1 18	■ Th 1	■ Sa 1	■ Tu 1	■ Fr 1	■ Su 1	■ We 1	■ Fr 1
■ Mo 2 1	■ Th 2	■ Th 2	■ Su 2	■ Tu 2	■ Fr 2	■ Su 2	■ We 2	■ Sa 2	■ Mo 2 40	■ Th 2	■ Sa 2
■ Tu 3	■ Fr 3	■ Fr 3	■ Mo 3 14	■ We 3	■ Sa 3	■ Mo 3 27	■ Th 3	■ Su 3	■ Tu 3	■ Fr 3	■ Su 3
■ We 4	■ Sa 4	■ Sa 4	■ Tu 4	■ Th 4	■ Su 4	■ Tu 4	■ Fr 4	■ Mo 4 36	■ We 4	■ Sa 4	■ Mo 4 49
■ Th 5	■ Su 5	■ Su 5	■ We 5	■ Fr 5	■ Mo 5 23	■ We 5	■ Sa 5	■ Tu 5	■ Th 5	■ Su 5	■ Tu 5
■ Fr 6	■ Mo 6 6	■ Mo 6 10	■ Th 6	■ Sa 6	■ Tu 6	■ Th 6	■ Su 6	■ We 6	■ Fr 6	■ Mo 6 45	■ We 6
■ Sa 7	■ Tu 7	■ Tu 7	■ Fr 7	■ Su 7	■ We 7	■ Fr 7	■ Mo 7 32	■ Th 7	■ Sa 7	■ Tu 7	■ Th 7
■ Su 8	■ We 8	■ We 8	■ Sa 8	■ Mo 8 19	■ Th 8	■ Sa 8	■ Tu 8	■ Fr 8	■ Su 8	■ We 8	■ Fr 8
■ Mo 9 2	■ Th 9	■ Th 9	■ Tu 9	■ Fr 9	■ Sa 9	■ Su 9	■ We 9	■ Mo 9 34	■ Tu 9	■ Th 9	■ Sa 9
■ Tu 10	■ Fr 10	■ Fr 10	■ Mo 10 15	■ Tu 10	■ Sa 10	■ Mo 10 28	■ Th 10	■ Su 10	■ Fr 10	■ Mo 10 41	■ Tu 10
■ We 11	■ Sa 11	■ Sa 11	■ We 11	■ Th 11	■ Su 11	■ Tu 11	■ Fr 11	■ Mo 11 37	■ We 11	■ Sa 11	■ Mo 11 50
■ Th 12	■ Su 12	■ Su 12	■ Tu 12	■ Fr 12	■ Mo 12 24	■ We 12	■ Sa 12	■ Tu 12	■ Th 12	■ Su 12	■ Tu 12
■ Fr 13	■ Mo 13 7	■ Mo 13 11	■ We 13	■ Sa 13	■ Tu 13	■ Th 13	■ Su 13	■ We 13	■ Fr 13	■ Mo 13 46	■ We 13
■ Sa 14	■ Tu 14	■ Tu 14	■ Fr 14	■ Su 14	■ We 14	■ Fr 14	■ Mo 14 33	■ Th 14	■ Sa 14	■ Tu 14	■ Th 14
■ Su 15	■ We 15	■ We 15	■ Sa 15	■ Mo 15 20	■ Th 15	■ Sa 15	■ Tu 15	■ Fr 15	■ Su 15	■ We 15	■ Fr 15
■ Mo 16 3	■ Th 16	■ Th 16	■ Tu 16	■ Fr 16	■ Sa 16	■ Su 16	■ We 16	■ Mo 16 42	■ Tu 16	■ Th 16	■ Sa 16
■ Tu 17	■ Fr 17	■ Fr 17	■ Mo 17 16	■ We 17	■ Sa 17	■ Mo 17 29	■ Th 17	■ Su 17	■ Fr 17	■ Mo 17 38	■ Tu 17
■ We 18	■ Sa 18	■ Sa 18	■ Tu 18	■ Th 18	■ Su 18	■ Tu 18	■ Fr 18	■ Mo 18 38	■ We 18	■ Sa 18	■ Mo 18 51
■ Th 19	■ Su 19	■ Su 19	■ We 19	■ Fr 19	■ Mo 19 25	■ We 19	■ Sa 19	■ Tu 19	■ Th 19	■ Su 19	■ Tu 19
■ Fr 20	■ Mo 20 8	■ Mo 20 12	■ Tu 20	■ Sa 20	■ Tu 20	■ Th 20	■ Su 20	■ We 20	■ Fr 20	■ Mo 20 47	■ We 20
■ Sa 21	■ Tu 21	■ Tu 21	■ Fr 21	■ Su 21	■ We 21	■ Fr 21	■ Mo 21 34	■ Th 21	■ Sa 21	■ Tu 21	■ Th 21
■ Su 22	■ We 22	■ We 22	■ Sa 22	■ Mo 22 21	■ Tu 22	■ Sa 22	■ Tu 22	■ Fr 22	■ Su 22	■ We 22	■ Fr 22
■ Mo 23 4	■ Th 23	■ Th 23	■ Tu 23	■ Fr 23	■ Sa 23	■ Su 23	■ We 23	■ Mo 23 43	■ Tu 23	■ Th 23	■ Sa 23
■ Tu 24	■ Fr 24	■ Fr 24	■ Mo 24 17	■ We 24	■ Sa 24	■ Mo 24 30	■ Th 24	■ Su 24	■ Fr 24	■ Mo 24 43	■ Tu 24
■ We 25	■ Sa 25	■ Sa 25	■ Tu 25	■ Th 25	■ Su 25	■ Tu 25	■ Fr 25	■ Mo 25 39	■ We 25	■ Sa 25	■ Mo 25 52
■ Th 26	■ Su 26	■ Su 26	■ We 26	■ Fr 26	■ Mo 26 26	■ We 26	■ Sa 26	■ Tu 26	■ Th 26	■ Su 26	■ Tu 26
■ Fr 27	■ Mo 27 9	■ Mo 27 13	■ Tu 27	■ Sa 27	■ Tu 27	■ Th 27	■ Su 27	■ We 27	■ Fr 27	■ Mo 27 48	■ We 27
■ Sa 28	■ Tu 28	■ Tu 28	■ Fr 28	■ Su 28	■ We 28	■ Fr 28	■ Mo 28 35	■ Th 28	■ Sa 28	■ Tu 28	■ Th 28
■ Su 29	■ We 29	■ We 29	■ Sa 29	■ Mo 29 22	■ Tu 29	■ Sa 29	■ Tu 29	■ Fr 29	■ Su 29	■ We 29	■ Fr 29
■ Mo 30 5	■ Th 30	■ Th 30	■ Tu 30	■ Fr 30	■ Sa 30	■ Su 30	■ We 30	■ Mo 30 44	■ Tu 30	■ Th 30	■ Sa 30
■ Tu 31	■ Fr 31	■ Fr 31	■ We 31	■ Mo 31	■ Tu 31	■ Mo 31 31	■ Th 31	■ Sa 31	■ Tu 31	■ We 31	■ Su 31

How to get more for your money

If you choose "3 for 2" or "4 for 3", the cheapest night is free.

	Season	Classic cottage		Spa cottage				Cluster house	Apartment		
		A4	A6	D4	K6	S8	F12	F18	*"KLYNGEHUS"	E2	E4
3 for 2 Book 3 nights - pay for 2. Arrival Thursday & Friday.	LOW	4.270	5.760	5.240	7.530	8.550	10.410	15.470	5.360	4.750	5.500
	MID	5.270	6.740	6.240	9.060	10.290	12.110	18.000	5.500	5.700	6.530
	HIGH	-	-	-	-	-	-	-	5.690	5.850	6.730
4 for 3 Book 4 nights - pay for 3. Arrival Wednesday, Thursday & Friday.	LOW	5.355	7.195	6.560	9.450	10.685	13.000	19.315	6.730	5.940	6.880
	MID	7.085	9.065	8.380	12.165	13.830	16.275	24.195	7.375	7.645	8.780
	HIGH	-	-	-	-	-	-	-	8.280	8.250	9.795
4 for 3 Book 4 nights - pay for 3. Arrival Sunday & Monday.	LOW	3.255	4.305	3.960	5.760	6.405	7.770	11.535	4.110	3.570	4.140
	MID	5.445	6.975	6.420	9.315	10.620	12.495	18.585	5.625	5.835	6.750
	HIGH	-	-	-	-	-	-	-	8.535	8.775	10.095
7 nights Arrival any day.	LOW	5.770	7.755	7.080	10.185	11.555	14.040	20.865	7.755	6.395	7.420
	MID	8.085	10.365	9.625	13.880	15.840	18.630	27.680	9.485	8.745	10.065
7 nights Arrival Friday & Saturday.	HIGH	12.530	16.240	14.610	20.755	23.700	26.330	39.125	13.480	13.390	16.060

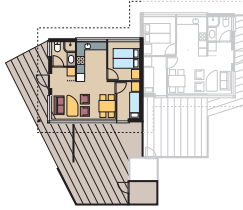
Book online on skallerup.dk or phone +45 9924 8400

All prices are in DKK included 25% VAT. Subject to tax increases etc. E&OE.

CLASSIC COTTAGE A4

4 persons

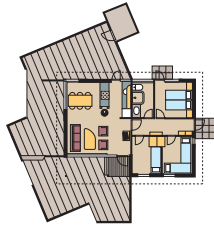
- 42 m²
- 2 bedrooms
- High chair and cot
- Semi-detached



CLASSIC COTTAGE A6

6 persons

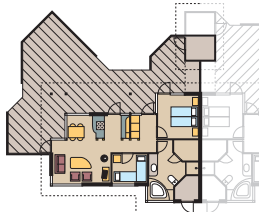
- 64 m²
- 3 bedrooms
- High chair and cot
- Wood-burning stove



SPA COTTAGE D4

4 + 2 persons

- 69 m²
- 2 bedrooms
- High chair and cot
- Wood-burning stove
- Semi-detached



SPA COTTAGE K6

6 persons

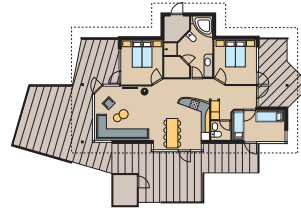
- 96 m²
- 2 bedrooms
- High chair and cot
- Wood-burning stove
- 2 bathrooms



SPA COTTAGE S8

8 persons

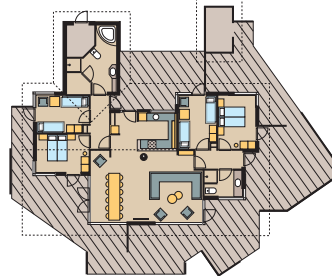
- 103 m²
- 3 bedrooms
- High chair and cot
- Wood-burning stove
- Bathroom and extra toilet



SPA COTTAGE F12

12 persons

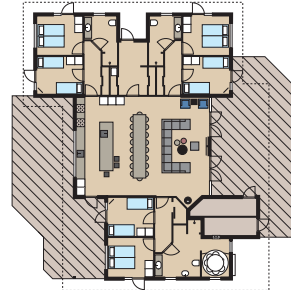
- 143 m²
- 4 bedrooms
- 2 high chairs + 2 cots
- Wood-burning stove
- 2 bathrooms
- TV, 2 pcs
- Charging plug for electric car



SPA COTTAGE F18

18 persons

- 247 m²
- 6 bedrooms
- 2 high chairs + 2 cots
- Pellet stove
- 3 bathrooms
- TV, 4 pcs
- Charging plug for electric car



CLUSTER HOUSE

4 + 2 persons

- 35 m²
- 2 bedrooms
- Loft (2 mattresses)
- Loft unsuitable for small children
- Lodges are situated close together
- Heating and electricity included



APARTMENT E2

2 persons

- 45 m² on 2 levels
- 1st floor with double bed
- Sea view
- Wood-burning stove
- West-facing balcony
- Incl. made-up beds and 2 towels pr person



No pets. Unsuitable for families with children and people with restricted mobility due to stairs.

APARTMENT E4

4 persons

- 59 m³ on 3 levels
- 2 bedrooms on the ground floor
- Sea view
- Wood-burning stove
- West-facing balcony
- Incl. made-up beds and 2 towels pr person



No pets. Unsuitable for families with children and people with restricted mobility due to stairs.

Staying at Skallerup Seaside Resort

All stays include free access to the waterpark and playland, activity workshop, animal farm, fitnesscenter etc., plus wi-fi and final cleaning.

Check-in from 3 pm - Check-out by 10 am
All facilities can be used on day of arrival and departure.

All accommodations have a bathroom with shower, kitchen/family room, microwave, cooker, dishwasher, TV and garden furniture.

No smoking in the accommodation and indoor communal areas. (There is a smoking room in the Irish pub).

ADDITIONAL CHARGES:

Electricity and heating are settled per kWh.
Environmental is settled per day.

Bed linen pack with 2 towels can be hired for DKK 100 per person.

Dogs and cats are welcome (except E2 and E4) subject to an extra cleaning charge of DKK 250.

For booking and further information visit: skallerup.dk