



2022 prices by season:

- LOW** When prices are lowest.
- MID** E.g. Danish school and public holidays.
- HIGH** Full weeks in the summer holidays.

The seasons are shown on this calendar. You will find our daily rates at skallerup.dk, but we recommend taking a closer look at the prices below first.

JAN	FEB	MAR	APR	MAY	JUN	JUL	AUG	SEP	OCT	NOV	DEC
■ Sa 1	■ Tu 1	■ Tu 1	■ Fr 1	■ Su 1	■ We 1	■ Fr 1	■ Mo 1 31	■ Th 1	■ Sa 1	■ Tu 1	■ Th 1
■ Su 2	■ We 2	■ We 2	■ Sa 2	■ Mo 2 18	■ Th 2	■ Sa 2	■ Tu 2	■ Fr 2	■ Su 2	■ We 2	■ Fr 2
■ Mo 3 1	■ Th 3	■ Th 3	■ Su 3	■ Tu 3	■ Fr 3	■ Su 3	■ We 3	■ Sa 3	■ Mo 3 40	■ Th 3	■ Sa 3
■ Tu 4	■ Fr 4	■ Fr 4	■ Mo 4 14	■ We 4	■ Sa 4	■ Mo 4 27	■ Th 4	■ Su 4	■ Tu 4	■ Fr 4	■ Su 4
■ We 5	■ Sa 5	■ Sa 5	■ Tu 5	■ Th 5	■ Su 5	■ Tu 5	■ Fr 5	■ Mo 5 36	■ We 5	■ Sa 5	■ Mo 5 49
■ Th 6	■ Su 6	■ Su 6	■ We 6	■ Fr 6	■ Mo 6 23	■ We 6	■ Sa 6	■ Tu 6	■ Th 6	■ Su 6	■ Tu 6
■ Fr 7	■ Mo 7 6	■ Mo 7 10	■ Th 7	■ Sa 7	■ Tu 7	■ Th 7	■ Su 7	■ We 7	■ Fr 7	■ Mo 7 45	■ We 7
■ Sa 8	■ Tu 8	■ Tu 8	■ Fr 8	■ Su 8	■ We 8	■ Fr 8	■ Mo 8 32	■ Th 8	■ Sa 8	■ Tu 8	■ Th 8
■ Su 9	■ We 9	■ We 9	■ Sa 9	■ Mo 9 19	■ Th 9	■ Sa 9	■ Tu 9	■ Fr 9	■ Su 9	■ We 9	■ Fr 9
■ Mo 10 2	■ Th 10	■ Th 10	■ Su 10	■ Tu 10	■ Fr 10	■ Su 10	■ We 10	■ Sa 10	■ Mo 10 41	■ Th 10	■ Sa 10
■ Tu 11	■ Fr 11	■ Fr 11	■ Mo 11 15	■ We 11	■ Sa 11	■ Mo 11 28	■ Th 11	■ Su 11	■ Tu 11	■ Fr 11	■ Su 11
■ We 12	■ Sa 12	■ Sa 12	■ Tu 12	■ Th 12	■ Su 12	■ Tu 12	■ Fr 12	■ Mo 12 37	■ We 12	■ Sa 12	■ Mo 12 50
■ Th 13	■ Su 13	■ Su 13	■ We 13	■ Fr 13	■ Mo 13 24	■ We 13	■ Sa 13	■ Tu 13	■ Th 13	■ Su 13	■ Th 13
■ Fr 14	■ Mo 14 7	■ Mo 14 11	■ Tu 14	■ Sa 14	■ Tu 14	■ Th 14	■ Su 14	■ We 14	■ Fr 14	■ Mo 14 46	■ We 14
■ Sa 15	■ Tu 15	■ Tu 15	■ Fr 15	■ Su 15	■ We 15	■ Fr 15	■ Mo 15 33	■ Th 15	■ Sa 15	■ Tu 15	■ Th 15
■ Su 16	■ We 16	■ We 16	■ Sa 16	■ Mo 16 20	■ Th 16	■ Sa 16	■ Tu 16	■ Fr 16	■ Su 16	■ We 16	■ Fr 16
■ Mo 17 3	■ Th 17	■ Th 17	■ Su 17	■ Tu 17	■ Fr 17	■ Su 17	■ We 17	■ Sa 17	■ Mo 17 42	■ Th 17	■ Sa 17
■ Tu 18	■ Fr 18	■ Fr 18	■ Mo 18 16	■ We 18	■ Sa 18	■ Mo 18 29	■ Th 18	■ Su 18	■ Tu 18	■ Fr 18	■ Su 18
■ We 19	■ Sa 19	■ Sa 19	■ Tu 19	■ Th 19	■ Su 19	■ Tu 19	■ Fr 19	■ Mo 19 38	■ We 19	■ Sa 19	■ Mo 19 51
■ Th 20	■ Su 20	■ Su 20	■ We 20	■ Fr 20	■ Mo 20 25	■ We 20	■ Sa 20	■ Tu 20	■ Th 20	■ Su 20	■ Tu 20
■ Fr 21	■ Mo 21 8	■ Mo 21 12	■ Th 21	■ Sa 21	■ Tu 21	■ Th 21	■ Su 21	■ We 21	■ Mo 21 47	■ Th 21	■ We 21
■ Sa 22	■ Tu 22	■ Tu 22	■ Fr 22	■ Su 22	■ We 22	■ Fr 22	■ Mo 22 34	■ Th 22	■ Sa 22	■ Tu 22	■ Th 22
■ Su 23	■ We 23	■ We 23	■ Sa 23	■ Mo 23 21	■ Th 23	■ Sa 23	■ Tu 23	■ Fr 23	■ Su 23	■ We 23	■ Fr 23
■ Mo 24 4	■ Th 24	■ Th 24	■ Su 24	■ Tu 24	■ Fr 24	■ Su 24	■ We 24	■ Sa 24	■ Mo 24 43	■ Th 24	■ Sa 24
■ Tu 25	■ Fr 25	■ Fr 25	■ Mo 25 17	■ We 25	■ Sa 25	■ Mo 25 30	■ Th 25	■ Su 25	■ Tu 25	■ Fr 25	■ Su 25
■ We 26	■ Sa 26	■ Sa 26	■ Tu 26	■ Th 26	■ Su 26	■ Tu 26	■ Fr 26	■ Mo 26 39	■ We 26	■ Sa 26	■ Mo 26 52
■ Th 27	■ Su 27	■ Su 27	■ We 27	■ Fr 27	■ Mo 27 26	■ We 27	■ Sa 27	■ Tu 27	■ Th 27	■ Su 27	■ Tu 27
■ Fr 28	■ Mo 28 9	■ Mo 28 13	■ Th 28	■ Sa 28	■ Tu 28	■ Th 28	■ Su 28	■ We 28	■ Fr 28	■ Mo 28 48	■ We 28
■ Sa 29	■ Tu 29	■ Tu 29	■ Fr 29	■ Su 29	■ We 29	■ Fr 29	■ Mo 29 35	■ Th 29	■ Sa 29	■ Tu 29	■ Th 29
■ Su 30	■ We 30	■ We 30	■ Sa 30	■ Mo 30 22	■ Th 30	■ Sa 30	■ Tu 30	■ Fr 30	■ Su 30	■ We 30	■ Fr 30
■ Mo 31 5	■ Th 31	■ Th 31		■ Tu 31		■ Su 31	■ We 31		■ Mo 31 44		■ Sa 31

How to get more for your money

If you choose "3 for 2" or "4 for 3", the cheapest night is free.

- 3 for 2** Book 3 nights - pay for 2. Arrival Thursday & Friday.
- 4 for 3** Book 4 nights - pay for 3. Arrival Wednesday, Thursday & Friday.
- 4 for 3** Book 4 nights - pay for 3. Arrival Sunday & Monday.
- 7 WEEK** Arrival any day.
- 7 WEEK** Arrival Friday & Saturday.

Season	Classic cottage		Spa cottage					Cluster house	Apartment	
	A4	A6	D4	K6	S8	F12	F18	*KLYNGEHUS*	E2	E4
LOW	4.150	5.590	5.090	5.850	8.300	10.110	15.020	5.200	4.610	5.340
MID	5.120	6.540	6.060	7.040	9.990	11.760	17.480	5.340	5.530	6.340
HIGH	-	-	-	-	-	-	-	5.520	5.680	6.530
LOW	5.205	6.985	6.370	7.340	10.375	12.625	18.755	6.530	5.765	6.680
MID	6.880	8.795	8.140	9.450	13.425	15.805	23.495	7.160	7.420	8.525
HIGH	-	-	-	-	-	-	-	10.820	11.140	12.800
LOW	3.165	4.185	3.840	4.470	6.225	7.545	11.205	3.990	3.465	4.020
MID	5.280	6.765	6.240	7.230	10.305	12.135	18.045	5.460	5.670	6.555
HIGH	-	-	-	-	-	-	-	10.820	11.140	12.800
LOW	5.600	7.530	6.875	7.910	11.220	13.630	20.255	7.530	6.210	7.205
MID	7.850	10.065	9.345	10.780	15.380	18.085	26.875	9.210	8.490	9.770
HIGH	12.165	15.765	14.185	16.120	23.010	25.565	37.985	13.085	13.000	15.590

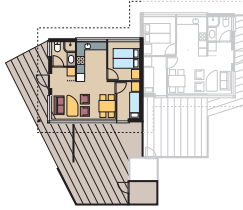
Book online on skallerup.dk or phone +45 9924 8400

All prices are in DKK included 25% VAT. Subject to tax increases etc. E&OE.

CLASSIC COTTAGE A4

4 persons

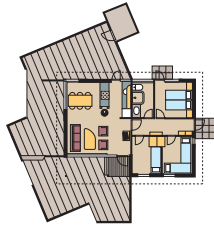
- 42 m²
- 2 bedrooms
- High chair and cot
- Semi-detached



CLASSIC COTTAGE A6

6 + 2 persons

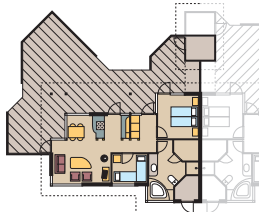
- 64 m²
- 3 bedrooms
- High chair and cot
- Wood-burning stove



SPA COTTAGE D4

4 + 2 persons

- 69 m²
- 2 bedrooms
- High chair and cot
- Wood-burning stove
- Semi-detached



SPA COTTAGE K6

6 persons

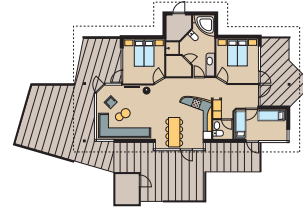
- 96 m²
- 2 bedrooms
- High chair and cot
- Wood-burning stove
- 2 bathrooms



SPA COTTAGE S8

8 persons

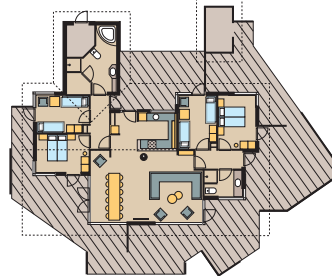
- 103 m²
- 3 bedrooms
- High chair and cot
- Wood-burning stove
- Bathroom and extra toilet



SPA COTTAGE F12

12 persons

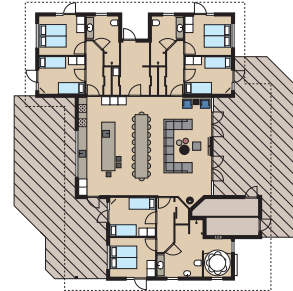
- 143 m²
- 4 bedrooms
- 2 high chairs + 2 cots
- Wood-burning stove
- 2 bathrooms
- TV, 2 pcs
- Charging plug for electric car



SPA COTTAGE F18

18 persons

- 247 m²
- 6 bedrooms
- 2 high chairs + 2 cots
- Pellet stove
- 3 bathrooms
- TV, 4 pcs
- Charging plug for electric car



CLUSTER HOUSE

4 + 2 persons

- 35 m²
- 2 bedrooms
- Loft (2 mattresses)
- Loft unsuitable for small children
- Lodges are situated close together
- Heating and electricity included



APARTMENT E2

2 persons

- 45 m² on 2 levels
- 1st floor with double bed
- Sea view
- Wood-burning stove
- West-facing balcony
- Incl. made-up beds and towels



No pets. Unsuitable for families with children and people with restricted mobility due to stairs.

APARTMENT E4

4 persons

- 59 m³ on 3 levels
- 2 bedrooms on the ground floor
- Sea view
- Wood-burning stove
- West-facing balcony
- Incl. made-up beds and towels



No pets. Unsuitable for families with children and people with restricted mobility due to stairs.

Staying at Skallerup Seaside Resort

All stays include free access to the waterpark and playland, activity workshop, animal farm, fitnesscenter etc., plus wi-fi and final cleaning.

Check-in from 3 pm - Check-out by 10 am
All facilities can be used on day of arrival and departure.

All accommodations have a bathroom with shower, kitchen/family room, microwave, cooker, dishwasher, TV, phone and garden furniture.

No smoking in the accommodation and indoor communal areas. (There is a smoking room in the Irish pub).

ADDITIONAL CHARGES:

Electricity and heating are settled per kWh.
Environmental is settled per day.

Bed linen pack with 2 bath towels can be hired for DKK 100 per person.

Dogs and cats are welcome in bungalows/lodges subject to an extra cleaning charge of DKK 250.

For booking and further information visit: skallerup.dk

